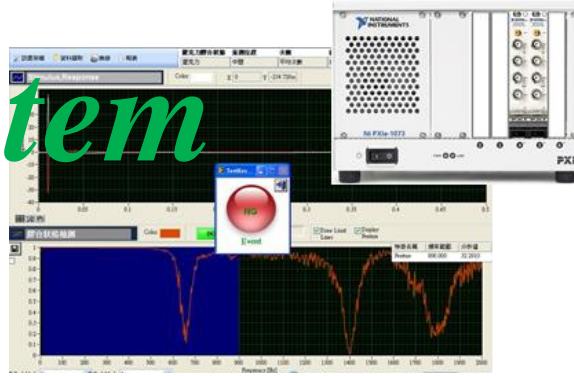


*The sound & vibration solution for production line.*

# SV System



There are many problems for applying vibration and noise measuring to production line, such as:

- The complication and variety of spectrum analysis methods.
- Requirement of specialized knowledge and experience.
- Complicate analyzing but easy operating.
- Combination of inspecting system and IOs and/or PLC of external facilities.
- Different analyzing methods for different inspection.
- Flexible QC criteria setting.

## SV System Featuring :

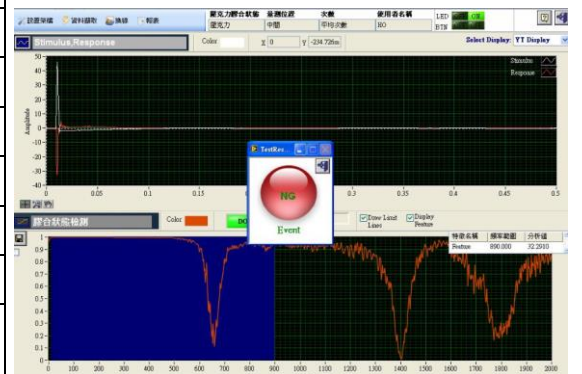
- Complete analyzing function and easy-to-use interface.
- Applications of various products for quality inspection, yield rate control and rising in production rate.
- Consultant mode for configuring and user mode for operating.
- Communicate with external facilities by defining DI/Os or using PLC.
- Flexible testing procedure editor.
- Simply and correctly inspection products for operators without professional background of vibration and noise.
- Simple and clear test result with OK or NG signals.

## Application:

Motor/engine/gearbox vibration/noise and adhering result inspection.

# SV System Specifications :

Model	SV-PXI SV-PCI SV-USB
Input Power	100~240Vac 1A
Channel Numbers	1, 2, 3, 4, 8, 16
Input Signal	IEPE Accelerometer, IEPE Microphone Engine rpm (optional)
Procedure Editor	Support
Database	Support
Flexible QC Criteria	Support
Consultant Mode	Support
User Mode	Support
IO Definition	Support
External IO Connection	DI*4, DO*4 (option) PLC(Mitsubishi/FATAK) (option)
Functions of Analysis	Time domain Waveform FFT Power Spectrum Frequency Response Function (FRF) Octave Order tracking (option) Characteristic Frequency Analysis(option) (Belt, Gear box, Bearing)
Data Processing	Filter Integral, Differential RMS, Mean, Peak, Frequency Band power FRF Band power Peak frequency
QC Criteria	Waveform threshold Frequency band power FRF Band power Peak frequency



Time	Feature	QC Type	QC Value	Event
5560110108:37 AM	Enable#0	600	3.86729	Pass
5560110109:13 AM	Enable#0	600	3.57947	Pass
5560110109:22 AM	Enable#0	600	5.26776	Pass
5560110109:33 AM	Enable#0	600	5.75776	Pass
5560110109:39 AM	Enable#0	600	12.667	Fail
5560110110:13 AM	Enable#0	600	6.71143	Fail
5560110110:26 AM	Enable#0	600	52.2576	Fail
5560110110:36 AM	Enable#0	600	5.46426	Pass
5560110110:46 AM	Enable#0	600	4.75497	Pass
5560110111:08 AM	Enable#0	600	2.91343	Pass
5560110111:18 AM	Enable#0	600	3.61964	Pass
5560110111:42 AM	Enable#0	600	1.89864	Pass
5560110112:09 AM	Enable#0	600	41.9789	Fail
5560110112:12 AM	Enable#0	600	41.9789	Fail

## Options :

- Tachometer Chief ENG01
- Tachometer Probe Chief PB01



Tel : +886-3-5936268  
Mail : service01@chiefsi.com.tw  
Web : www.chiefsi.com.tw