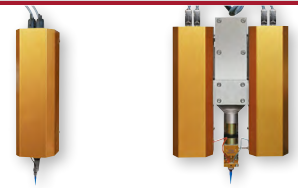


MRC500 volumetric dispensing robotic cell



Piston-cylinder - NVD & NBD



Eccentric screw - CFD & CBD



Jet dispenser



Cartridge dispenser



The robotic cell is a free-standing automated machine. It is purposed-built for dispensing applications and its design is standardized. Therefore, it is well-proven, available faster and costs less than customized designs.

+ Advantages

- Ideal for automated processes - free standing cell
- High process accuracy and repeatability
- Process tested in laboratory with quality and cycle time optimization
- Compact purpose-built solution for any mta dispensers
- Suitable for inline production
- Large working area
- User friendly
- Easy maintenance
- Open architecture for additional integration

⚙️ Features

- 3-axis cartesian robot
- Welded frame construction
- 500x500mm working area
- Needle cleaning unit
- Purge bin
- Industrial PC controller with Windows 10 operating system
- Industrie 4.0
- Intuitive menu-driven mta MotionEditor software
- Traceability of dispensing settings
- Light curtains and safety guardings
- Signal tower for machine status

↗️ Options

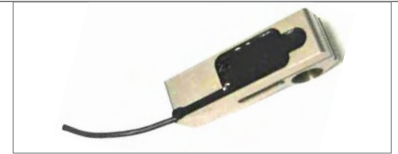
- Fixture customization
- Conveyor integration
- Double manual loading slide
- Manual safety door
- Monitoring camera
- Vision for recentering
- Vision quality inspection
- Needle recentering system
- Traceability of parts
- ESD protection kit
- Part presence sensor
- Part height measuring sensor
- Material feeding systems (container, cartridge, etc.)
- Material processing systems (stirring, degassing, etc.)

Typical dispensing applications

Automotive



- Automotive sensor
- Globtop dispensing of two-components Epoxy for selective conformal coating
- Dispensed volume of 30 [mm³]

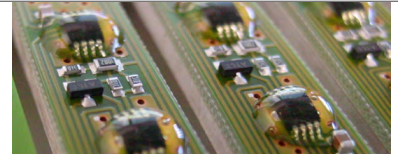


- Force sensor for car seat
- Coating of an electronic circuit with a two-component polyurethane
- Dispensed volume of 5 [cm³]

Electronics



- Electronic connector
- Filling with two-components silicone
- Dispensed volume of 120 [mm³]



- Electronic module
- Conformal coating with mono-component UV adhesive
- Dispensed volume of 35 [mm³]

Medical



- Pacemaker
- Deposit of mono-component silicone adhesive to stick both parts together
- Dispensed volume of 40 [mm³]



- Rotary pump
- Filling with a two-component polyurethane
- Dispensed volume of 5 [cm³]

MRC500 technical specifications

Working area	500 x 500 x 200 mm
Positioning repeatability	±20 µm
Speed	X and Y: <300mm/s, Z <150mm/s
Programming	HMI Windows oriented
Operating system	WINDOWS
Electronic control	industrial PC
Interfaces	Ethernet / USB port / Serial port
Execution mode	Standalone or slave via I/O or TCP-IP*
Axis actuation	Servomotors
Power supply	400/208V- 50/60Hz
Power consumption	1 kVA
Air pressure	max. 6 bar
Dimensions	1'425 x 1'420 x 2'250 mm
Weight	~850 kg

**or others upon request*

