

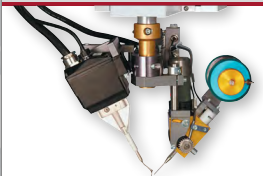
TR300 selective soldering table-top robot



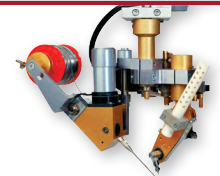
Iron



Induction



Microflame



MLH45 laser



The table-top robot is a cost-effective platform that improves quality, consistency and throughput compared to hand-soldering without the expense of fully automated systems.

Advantages

- Ideal for semi-automated processes
- Requiring less skills and training than hand-soldering
- High process accuracy and repeatability
- Process tested in laboratory
- Compact purpose-built solution for any mta soldering heads
- Robust for high load work
- Large working area
- User friendly
- Easy maintenance
- Open architecture for additional integration

Features

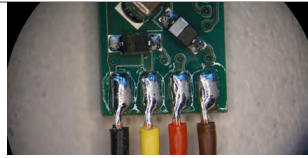
- 3-axis cartesian robot
- Sturdy aluminium frame
- 300x300mm working area
- Anti-jam wire feeder system
- Industrial PC controller with Windows 10 operating system
- Industrie 4.0
- Intuitive menu-driven mta MotionEditor software
- Soldering settings traceability
- Light curtains and safety guardings
- Metal sides and doors for laser process to protect operators
- Remote maintenance with Team Viewer

Options

- Rotary axis
- Fixture customization
- Fume extraction system
- Monitoring camera
- Vision for recentering
- Vision quality inspection
- Traceability of parts and integration of barcode reader
- ESD protection kit
- Part presence sensor
- Part height measuring sensor
- Signal tower for machine status
- Load and unload from behind
- Automated sponge dampening

Typical soldering applications

Automotive



- Automotive application
- 4 points with iron
- Point size of 1 mm

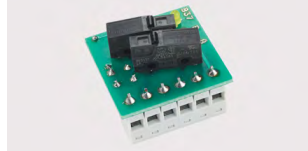


- Pneumatic pressure sensor
- 3 points with iron
- Point size of 2 mm



- Automotive battery cable
- 1 point with induction
- Point size of 16 mm

Electronics / sensors



- Terminals on a PCB
- 14 points with iron
- Point size of 2 mm

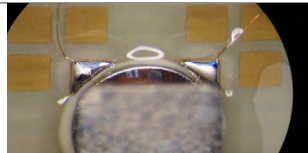


- Connector of inductive detector
- 5 points with iron
- Point size of 2 and 3 mm



- Temperature sensor
- 2 points with induction
- Point size of 1.5 mm

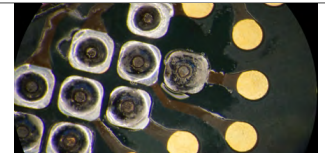
Medical



- Medical application
- 2 points with laser
- Point size of 0.3 mm



- Medical pressure sensor
- 4 points with laser
- Point size of 1 mm



- Medical application
- 9 points with laser
- Point size of 0.8 mm

TR300 technical specifications

Working area	300 x 300 x 100 mm
Positioning repeatability	±20 µm
Speed	X and Y: <200mm/s, Z <100mm/s, T <=3.14 rad/s
Programming	HMI Windows oriented
Operating system	WINDOWS
Electronic control	industrial PC
Interfaces	Ethernet / USB port / Serial port
Execution mode	standalone or slave via I/O or TCP/IP
Axis actuation	stepper motor
Power supply	230/115V- 50/60Hz
Power consumption	1 kVA
Air pressure	max. 6 bar
Dimensions	854 x 851 x 1'070 mm
Weight	~125 kg

