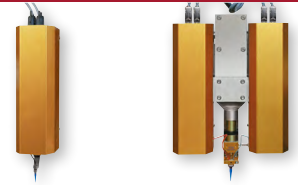


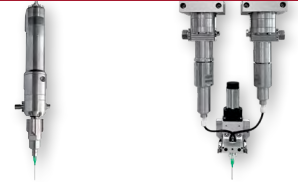
TR300 volumetric dispensing table-top robot



Piston-cylinder - NVD & NBD



Eccentric screw - CFD & CBD



Jet dispenser



Cartridge dispenser



The table-top robot is used for semi-automated dispensing operations of liquid or viscous materials. It combines flexibility with the required high levels of process quality and repeatability, all at reasonable costs.



Advantages

- Ideal for semi-automated processes
- High process accuracy and repeatability
- Process tested in laboratory with quality and cycle time optimization
- Compact purpose-built solution for any mta dispensers
- Robust for high load work
- Large working area
- User friendly
- Easy maintenance
- Open architecture for additional integration



Features

- 3-axis cartesian robot
- Sturdy aluminium frame
- 300x300mm working area
- Needle cleaning unit
- Industrial PC controller with Windows 10 operating system
- Industrie 4.0
- Intuitive menu-driven mta MotionEditor software
- Traceability of dispensing settings
- Light curtains and safety guardings
- Remote maintenance with Team Viewer



Options

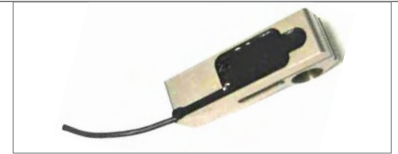
- Fixture customization
- Monitoring camera
- Vision for recentering
- Vision quality inspection
- Needle recentering system
- Traceability of parts
- ESD protection kit
- Part presence sensor
- Part height measuring sensor
- Signal tower for machine status
- Container with or without mixer
- Cartridge with holder
- Level detection
- Automated sponge dampening
- Complete handling of material processing system

Typical dispensing applications

Automotive



- Automotive sensor
- Globtop dispensing of two-components Epoxy for selective conformal coating
- Dispensed volume of 30 [mm³]

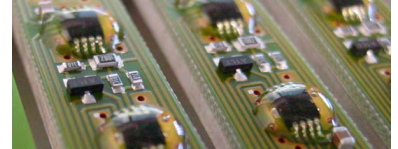


- Force sensor for car seat
- Coating of an electronic circuit with a two-component polyurethane
- Dispensed volume of 5 [cm³]

Electronics



- Electronic connector
- Filling with two-components silicone
- Dispensed volume of 120 [mm³]



- Electronic module
- Conformal coating with mono-component UV adhesive
- Dispensed volume of 35 [mm³]

Medical



- Pacemaker
- Deposit of mono-component silicone adhesive to stick both parts together
- Dispensed volume of 40 [mm³]



- Rotary pump
- Filling with a two-component polyurethane
- Dispensed volume of 5 [cm³]

TR300 Technical specifications

| | |
|----------------------------------|--|
| Working area | 300 x 300 x 100 mm |
| Positioning repeatability | ±20 µm |
| Speed | X and Y: <200mm/s, Z <100mm/s |
| Programming | HMI Windows oriented |
| Operating system | WINDOWS |
| Electronic control | industrial PC |
| Interfaces | Ethernet / USB port / Serial port |
| Execution mode | standalone or slave with via I/O or TCP/IP |
| Axis actuation | stepper motor |
| Power supply | 230/115V- 50/60Hz |
| Power consumption | 1 kVA |
| Air pressure | max. 6 bar |
| Dimensions | 854 x 851 x 1'070 mm |
| Weight | ~125 kg |

